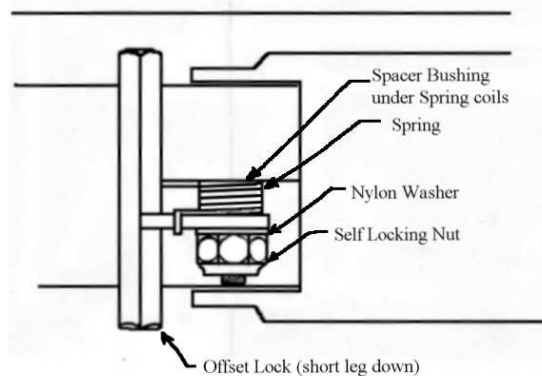


Spring Loaded Lock Conversion Instructions for the DESCO Air Hat Cat. No. 61041

This conversion kit was developed for DESCO Air Hats which will be used in an environment where significant snagging hazards exist.

The clamping system on a standard Air Hat relies upon drag being induced on the clamp and lock via the bolts, nuts, and Nylon washers. It is necessary in any pre-dive inspection to assure that sufficient drag is present on a standard Air Hat clamping system. Drag is set by tightening the self locking nuts on both the clamps and locks until they will stay in any position they are placed.

The exception to this rule is in the new spring loaded locking mechanism. The lock must be free enough to snap closed on its own unhindered by excessive drag. Slight drag is necessary to hold the lock straight through its arc of travel. The nut should be tightened enough to assure the lock will not move laterally on the bolt. The lock should travel smoothly and straight through its arc of motion, impelled only by the spring.



To install the conversion kit remove the standard lock assembly. The conversion requires an offset lock and a longer lock screw to accommodate the spring. New standard parts are included in the kit to assure proper operation and it is recommended that the new parts be used.

1. Insert the new lock screw (cat. no. 61044) in the neck ring tab.
2. Insert the Nylon spacer bushing (cat. no. 61043) onto the lock screw.
3. Insert the spring (cat. no. 61042) over the bushing with the hook end facing the front of the helmet.
4. Pull the hook end of the spring back and insert the offset lock (cat. no. 61045) onto the lock screw. The offset lock should be oriented so that the longer leg of the cross bar is pointed upward towards the top of the helmet. Place the hook of the spring over the pivot tab of the offset lock.
5. Insert the Nylon washer (cat. no. 61031) over the lock screw.
6. Install the self locking nut (cat. no. 61032) onto the lock screw and tighten just enough so the lock cannot be rocked up and down. The lock should be held straight by the spacer bushing and Nylon washer.